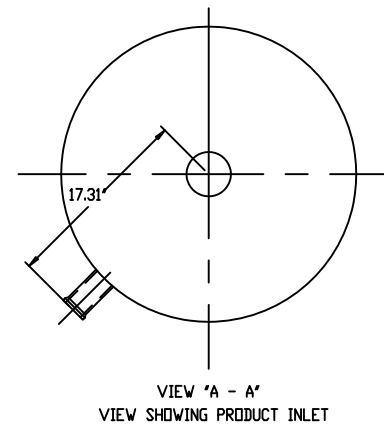
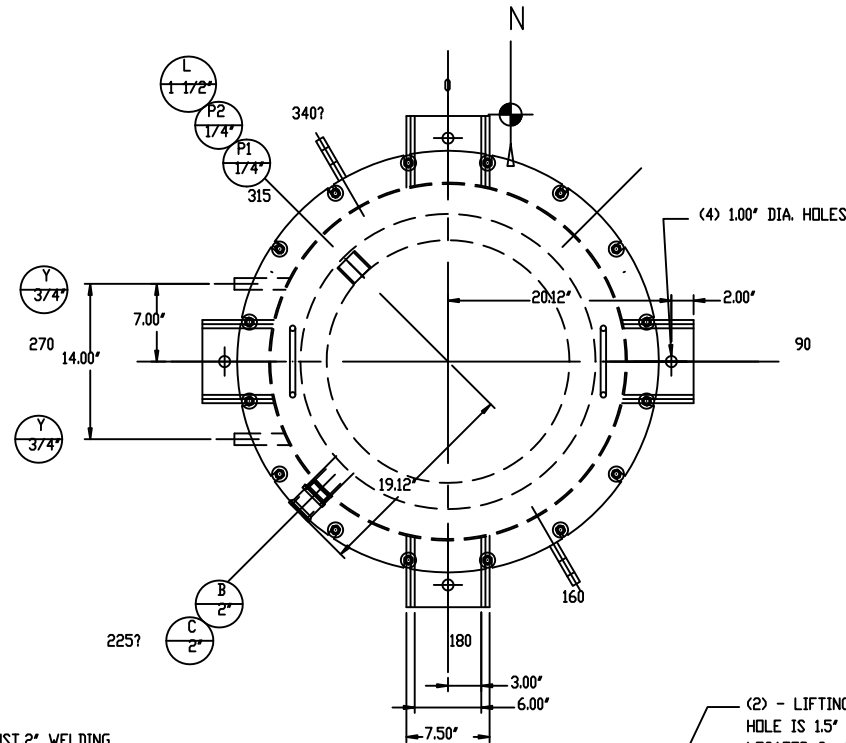


NOZZLE SCHEDULE							
MARK	QUAN.	SIZE	SCHED./THK.	RATING	ORIENTATION	SERVICE	
A	1	4"	STANDARD		TRI-CLOVER	BOTTOM	PRODUCT OUTLET TO EXPANSION JOINT
B	1	2"	STANDARD		TRI-CLOVER	225°	AIR/PRODUCT INLET
C	1	2"	STANDARD		TRI-CLOVER	225°	AIR OUTLET
Y	1	3/4" NPT	STANDARD	150 L.B.	PIPE NIPPLE	AS SHOWN	PLANT AIR CONNECTION
P1	1	1/4" NPT	STANDARD	150 L.B.	COUPLING	315°	DIFFERENTIAL PRESSURE
P2	1	1/4" NPT	STANDARD	150 L.B.	COUPLING	315°	DIFFERENTIAL PRESSURE
L	1	1 1/2" NPT	STANDARD	150 L.B.	COUPLING	315°	HIGH LEVEL

*** FILTER SPECIFICATION ***

- FILTER MODEL: VC24-9-32, FOUR (4) REQUIRED
- DESIGN PRESSURE: INTERNAL - 1.0 PSIG
EXTERNAL - 12" HG VACUUM (5.9 PSIG EXT)
- OPERATING PRESSURE: 2" - 4" W.G. DIFFERENTIAL
- DESIGN TEMPERATURE: 100 F°
- OPERATING TEMPERATURE: AMBIENT
- FILTER CLOTH AREA: 23 SQUARE FEET
- OPERATING VOLUME: 120 ACFM (AVERAGE MAX.)
- AIR TO CLOTH RATIO: 5:2 TO 1
- FILTER TUBES: 9 TUBES, 24" LONG, STYLE 'E'
- FILTER MEDIA: 16 OZ POLYESTER FELT WITH GORTEX MEMBRANE AND GRD. WIRE SEWN IN
- MATERIAL OF CONSTRUCTION:
PRODUCT AREA: 304 S/S
NON-CONTACT AREA: 304 S/S, C/S, ALUMINUM
- INTERIOR FINISH:
PRODUCT AREA: BARE METAL
NON-PRODUCT AREA: ALL CARBON STEEL SURFACES WILL BE PRIMED PER YI STD PAINT SPEC. 082.500.01
- EXTERIOR FINISH: ALL C/S SURFACES WILL BE PRIMED AND PAINTED WITH ONE (1) COAT OF Y.I. STANDARD BLUE ENAMEL
- WELDING, GRINDING, AND CLEAN-UP PER Y.I. ENGINEERING SPECIFICATION 185.200 AS FOLLOWS:
WELDING _____ CLASS 2
GRINDING, PRODUCT AREA _____ CLASS 3
GRINDING, NON-PRODUCT AREA _____ CLASS 2
CLEAN-UP, S/S _____ CLASS 2
CLEAN-UP, C/S _____ CLASS 1
- JET PIPES: C/S, PRIMED PER Y.I. SPEC. 082.500.01
- FILTER CAGES: C/S, BARE METAL, STYLE 'E', 24" LONG
- CAGE CLAMPS: ALUMINUM
- GASKET MATERIAL: WHITE NEOPRENE
- ELECTRICALS AND CONDUIT: NEMA 4, 24 VOLT DC
- SOLENOID VALVES: TWO (2) - NEMA 4 ENCLOSURE
- DIAPHRAGM VALVES: TWO (2) - 3/4" SIZE
- TIMER: MODEL DNC-T2010-ADC MOUNTED IN NEMA 4 ENCLOSURE MOUNTING AND WIRING TO SOLENOID VALVES BY Y.I.
- NORMAL TIMER SETTING RATE (OFF-TIME) - 30 SECONDS
DURATION (ON-TIME) - 1 SECOND
REQUIRES 2.2 CFM OF AIR AT 90 PSIG
- TESTING AND INSPECTION: Y.I. STANDARD
- APPROXIMATE WEIGHT EMPTY: 800 POUNDS
- CAPSPHOTOMELIC DIFFERENTIAL PRESSURE GAUGE INCLUDED, 'DYVER' MODEL 4301SRMR, 0-15" WATER RANGE, MOUNTING AND CONNECTIONS BY Y.I. LOCATED IN NEMA 4 ENCLOSURE BOX WITH TIMER

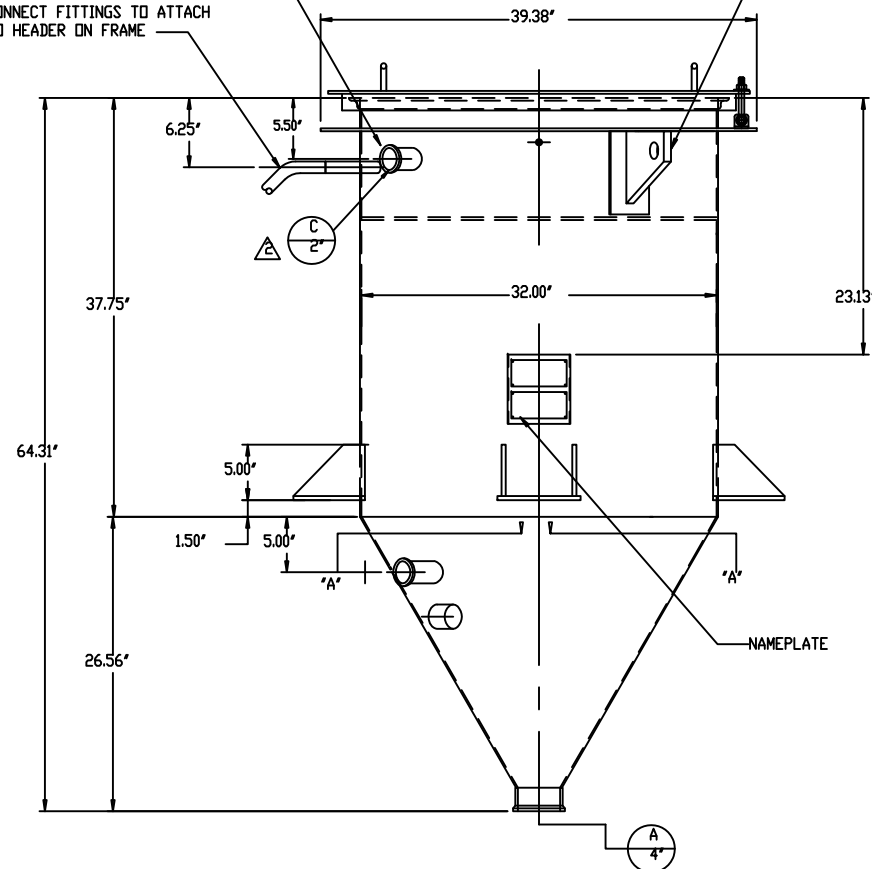


VIEW 'A - A'
VIEW SHOWING PRODUCT INLET

(2) - LIFTING LUGS,
HOLE IS 1.5" DIA,
LOCATED @ 160° & 340°
*** USE BOTH LUGS
TO LIFT FILTER ***

AIR EXHAUST, 2" WELDING
FERRULE, S/S

(2) 3/4" HOSE WITH QUICK
CONNECT FITTINGS TO ATTACH
TO HEADER ON FRAME



AIR/PRODUCT INLET, 2"
WELDING FERRULE
S/S, SEE PLAN VIEW
FOR ORIENTATION

GROUNDING/BONDING CONNECTION,
PER Y.I. DRAWING 1-1413,
GROUNDING/BONDING WIRE TO BE
SUPPLIED BY CUSTOMER

(2) DIFFERENTIAL PRESSURE
CONNECTION, 1/4" NPT
LOCATED AT 315°

GROUNDING/BONDING CONNECTION,
PER Y.I. DRAWING 1-1413,
GROUNDING/BONDING WIRE TO BE
SUPPLIED BY CUSTOMER

4" WELDING
FERRULE, S/S

GENERAL TOLERANCES	
UNLESS OTHERWISE SPECIFIED THE FOLLOWING SHALL APPLY	
MACHINING - .0015	ANGLE = .007
SURFACE ROUGHNESS HEIGHT 63 MICROINCHES OR LESS	
FABRICATION - UNDER 6	6 TO 24
24 TO 60	OVER 60
.06 ±	.12 ±
.19 ±	.25 ±
UNLESS OTHERWISE SPECIFIED DIMENSIONS ARE IN INCHES	
PRINT ISSUE DATE	CAD FILE NUMBER: /wtp/dst/
	FILE: w04/13924

CUSTOMER	--
CUST. NO.	
YOUNG ORDER NO.	13924
TITLE	ASSEMBLY - MODEL VC24-9-32, STYLE 'E', UNI-CAGE FILTER COLLECTOR



DRAWN BY	MCR	SCALE	1.50"=1'-0"
CHECKED BY		DATE	5/25/99
DRAWING NUMBER	4-4398-62.03		